

# Hybrid and Electric Vehicle Technology



Introducing our instructional module for Hybrid and Electric Vehicles

**LJ CREATE**<sup>™</sup>  
Learning for life



[www.ljcreate.com](http://www.ljcreate.com)

# Hybrid and Electric Vehicle Technology Module

## SIMULATOR/PANEL TRAINER

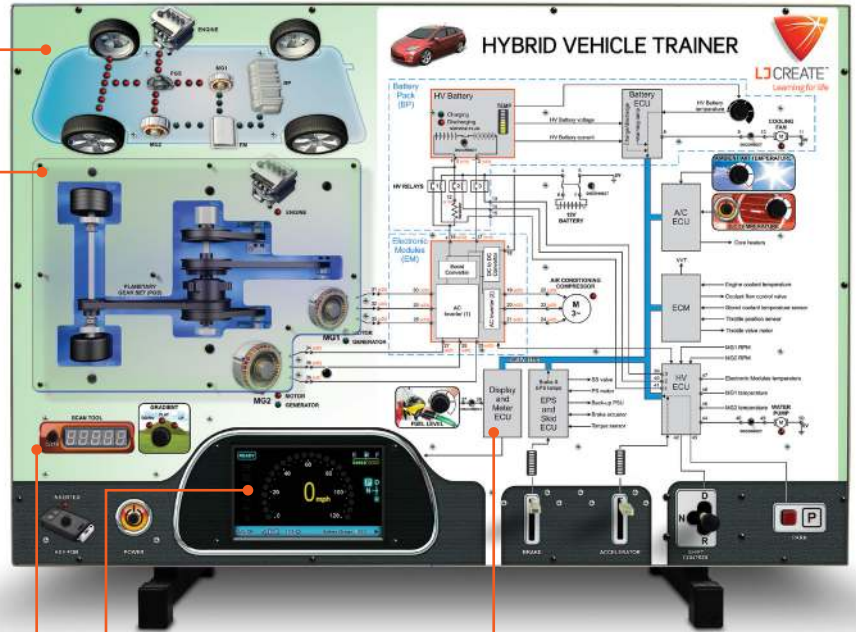
This computer-linked panel trainer simulates the operation of a Series-Parallel Hybrid System.

Computer-inserted faults allow the student to perform troubleshooting practical tasks on the panel trainer. Stored faults may be recalled by pressing a button on an in-built scan tool.

It is designed for use by students or for front-of-class instructor demonstration.

### 5 KEY FEATURES:

1. POWER FLOW MIMIC
2. PLANETARY GEARBOX
3. FAULT INSERTION
4. DASHBOARD DISPLAY
5. ELECTRICAL CIRCUIT SCHEMATIC



Real life troubleshooting using real test equipment

## INNOVATIVE SOFTWARE

This module includes high-quality curriculum materials and a sophisticated virtual hybrid vehicle simulator. The curriculum materials are divided into on-screen theory presentations, investigations, and assessment tests. The dynamic simulator software can be used to control the panel trainer or it can be used independently, illustrating the function of each component during the different phases of power application and recharging.



HYBRID VEHICLE SIMULATOR



THEORY PRESENTATIONS



INVESTIGATIONS

For more information, please visit:  
[www.ljcreate.com](http://www.ljcreate.com)

LJ Create

T: 1-800-237-3482  
 F: 1-631-758-1788  
 E: info@ljcreate.com